



Cable ID/ Test ID: 6AO-011032

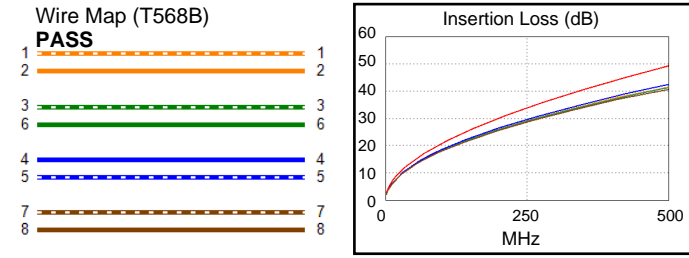
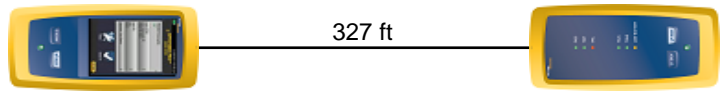
Test Limit: TIA Cat 6A Channel
Limits Version: V7.11
Date / Time: 01/14/2026 01:30:29 PM
Operator: CC
Headroom 14.4 dB (NEXT 3,6-4,5)
Cable Type: Cat 6A S/FTP
NVP: 74.8%

Main: Versiv
S/N: 1927448
Software Version: V6.13 Build 2
Calibration Date: 07/30/2025
Adapter: DSX-8000 (DSX-CHA804)
S/N: 23340195

Test Summary: PASS

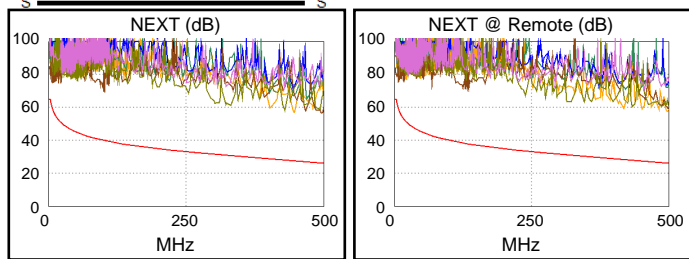
Remote: Versiv
S/N: 1927219
Software Version: V6.13 Build 2
Calibration Date: 07/30/2025
Adapter: DSX-8000R (DSX-CHA804)
S/N: 23340196

Length (ft), Limit 328	[Pair 7,8]	327
Prop. Delay (ns), Limit 555	[Pair 4,5]	453
Delay Skew (ns), Limit 50	[Pair 4,5]	9
Resistance (ohms)	[Pair 4,5]	14.22
Insertion Loss Margin (dB)	[Pair 4,5]	6.9
Frequency (MHz)	[Pair 4,5]	500.0
Limit (dB)	[Pair 4,5]	49.3

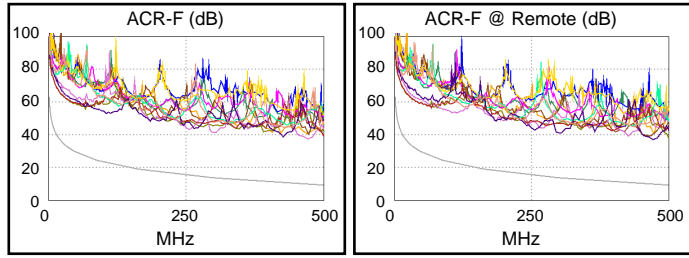


Worst Case Margin Worst Case Value

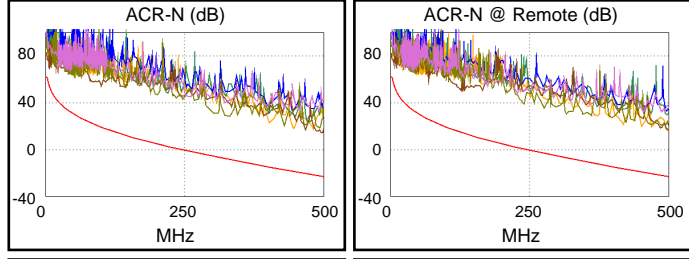
PASS	MAIN	SR	MAIN	SR
Worst Pair	3,6-4,5	3,6-4,5	3,6-4,5	1,2-3,6
NEXT (dB)	15.3	14.4	30.4	31.4
Freq. (MHz)	3.0	3.1	496.0	497.0
Limit (dB)	65.0	64.8	26.2	26.2
Worst Pair	3,6	3,6	3,6	3,6
PS NEXT (dB)	17.4	16.1	31.4	31.5
Freq. (MHz)	3.3	3.3	490.0	500.0
Limit (dB)	62.0	62.0	23.5	23.2



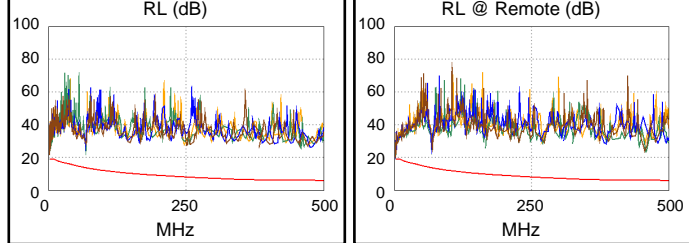
PASS	MAIN	SR	MAIN	SR
Worst Pair	3,6-7,8	7,8-3,6	3,6-7,8	7,8-3,6
ACR-F (dB)	26.6	26.3	27.1	26.8
Freq. (MHz)	302.0	302.0	466.0	466.0
Limit (dB)	13.7	13.7	9.9	9.9
Worst Pair	3,6	3,6	7,8	3,6
PS ACR-F (dB)	28.4	28.3	29.8	28.7
Freq. (MHz)	1.0	1.0	466.0	471.0
Limit (dB)	60.3	60.3	6.9	6.8



N/A	MAIN	SR	MAIN	SR
Worst Pair	3,6-4,5	3,6-4,5	3,6-4,5	1,2-3,6
ACR-N (dB)	15.7	14.9	37.2	39.5
Freq. (MHz)	3.0	3.1	496.0	498.0
Limit (dB)	61.4	61.1	-22.9	-23.1
Worst Pair	3,6	3,6	3,6	3,6
PS ACR-N (dB)	18.0	16.7	39.2	39.5
Freq. (MHz)	3.3	3.3	490.0	500.0
Limit (dB)	58.2	58.2	-25.3	-26.1



PASS	MAIN	SR	MAIN	SR
Worst Pair	3,6	3,6	3,6	3,6
RL (dB)	8.7	6.2	11.0	17.3
Freq. (MHz)	2.8	2.8	68.0	458.0
Limit (dB)	19.0	19.0	13.7	6.0



Compliant Network Standards:
 10BASE-T 100BASE-TX 100BASE-T4
 1000BASE-T 2.5GBASE-T 5GBASE-T
 10GBASE-T ATM-25 ATM-51
 ATM-155 100VG-AnyLan TR-4
 TR-16 Active TR-16 Passive